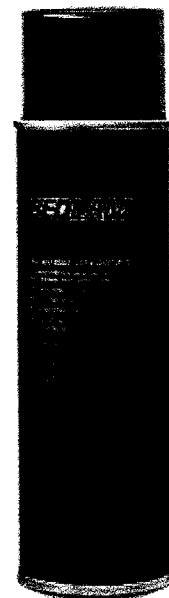




Specimen Label

**KILLS BED BUGS, LICE & DUST MITEST™**

- Kills Bed Bugs and their eggs
- For indoor use in the home and non-food areas of restaurants, schools, nursing homes, warehouses, offices, apartments, hotels, motels, kennels, and hospitals
- Will not stain water-safe fabrics and surfaces
- Kills Bed Bugs on wood, ceramic surfaces and carpet for up to 2 weeks
- Reduces Bed Bug egg hatch in both susceptible and some resistant strains of Bed Bug eggs



KEEP OUT OF REACH OF CHILDREN

**CAUTION**

See inside for first aid and precautionary statements.

**ACTIVE INGREDIENTS:**

|  |         |
|--|---------|
| 3-phenoxybenzyl-(1RS, 3RS, 1RS, 3SR)-2, 2-dimethyl-3-(2-methylprop-1-enyl) cyclopropanecarboxylate ..... | 0.40%   |
| N-Octyl bicycloheptene dicarboximide .....   | 1.53%   |
| OTHER INGREDIENTS .....  | 98.07%  |
|  | 100.00% |

**DIRECTIONS FOR USE**

It is a violation of Federal law to use this product in a manner inconsistent with its labeling.

**USE RESTRICTIONS:**

- Do not apply this product in a manner that will contact workers or other persons either directly or through drift
- Only protected handlers may be in the area during application
- Remove pets, birds, and cover fish aquariums before spraying, and turn aquarium systems off
- Do not allow adults, children, or pets to enter the treated area until sprays have dried. Do not use treated article until spray has dried
- Do not use in aircraft cabins
- In hospitals and nursing homes, remove patients before treatment. Ventilate room for two hours before returning patients
- Do not apply more than 1 time per day

**THIS PRODUCT IS NOT FOR USE ON HUMANS:**

If lice infestation should occur on humans, use a product labeled for use on humans. Do not use in commercial food/feed processing, preparation, food/feed storage or serving areas. Remove or cover dishes, utensils, food processing equipment, and food preparation surfaces, or wash them before use. Remove or cover exposed food and drinking water before application.

SHAKE WELL BEFORE EACH USE.

**APPLICATION:** Spray in an inconspicuous area to test for possible staining or discoloration. Evaluate test area after drying. Hold container upright with nozzle aimed away from you. Depress valve and spray from a distance of 8 to 10 inches. Spray each square foot for 5 seconds or until damp. Do not wet articles to the point of run-off or drip. Most effective results are achieved when used as part of a treatment protocol that includes physical, environmental and other chemical pest control measures. Vacate room after treatment and ventilate before reoccupying. Do not allow children or pets to contact treated areas until surfaces are dry. Allow sprayed articles and surfaces to dry thoroughly before using or replacing bedding.

**TO KILL LICE:**

Spray only those garments, parts of bedding, including mattresses and furniture that cannot be either laundered or dry-cleaned.

**TO KILL TICKS AND FLEAS:**

Spray around beds, furniture and pet's habitat. Spray pet sleeping quarters, bedding, floor and floor covering where pets are kept. Use only a recommended pet spray on pets.

**TO KILL DUST MITES:**

Thoroughly vacuum entire room concentrating on areas where mites congregate: such as mattresses, box springs, headboards, walls, floors, carpeting and baseboards. Then spray surfaces until damp.

**TO KILL BED BUGS AND BED BUG EGGS:**

Apply as a spot treatment to cracks and crevices on and around baseboards, floorboards, bed frames, wall hangings, headboards, furniture, door and window frames, millwork and walls. Apply as a surface spray to carpet, mattresses, box springs, walls, furniture, bedding, floor and floor coverings, rugs, garments, luggage, closets, drapes and other window appointments. Thoroughly clean and air-out mattresses and box springs. Then treat areas that may harbor Bed Bugs and their eggs, such as tufts, folds and seams. When treating for Bed Bug eggs, spray each square foot for 13 seconds or until damp.

**TO KILL CLOTHES MOTHS AND CARPET BEETLES:**

Apply as a spot treatment to cracks and crevices on and around baseboards, floorboards, furniture and around the edges of carpet. Apply as a surface spray to carpet, rugs, closets, baseboards, furniture, on floor and floor coverings. When treating carpets, floor coverings or rugs spray a sufficient amount to get the spray down into the base where the larval stages are feeding. Spray upper and lower surfaces of rugs or floor covering when possible.

## STORAGE AND DISPOSAL

Do not contaminate water, food, or feed by storage and disposal.

### PESTICIDE STORAGE:

Store in a cool, dry area. Always store pesticides in the original container. Store away from food and pet food.

### PESTICIDE DISPOSAL AND CONTAINER HANDLING:

Do not puncture or incinerate!

Non-refillable container. Do not reuse or refill this container.

**If empty:** Place in trash or offer for recycling if available.

**If partly filled:** Call your local solid waste agency for disposal instructions.

## PRECAUTIONARY STATEMENTS

### HAZARDS TO HUMANS AND DOMESTIC ANIMALS

## CAUTION

Harmful if absorbed through skin. Avoid contact with eyes, skin or clothing.

### PERSONAL PROTECTIVE EQUIPMENT (PPE)

Applicators and other handlers must wear the following:

- Long sleeved shirt
- Long pants
- Shoes and socks, and
- Chemical resistant gloves made of any waterproof material.

### USER SAFETY REQUIREMENTS

Follow manufacturer's instructions for cleaning/maintaining PPE. If no such instructions for washables exist, use detergent and hot water. Keep and wash PPE separately from other laundry.

Discard clothing and other absorbent materials that have been drenched or heavily contaminated with this product. Do not reuse them.



Federal regulations prohibit  
CFC propellants in aerosols

### USER SAFETY RECOMMENDATIONS

User should wash hands before eating, drinking, chewing gum, using tobacco, or using the toilet.

Users should remove clothing/PPE immediately if pesticide gets inside. Then wash thoroughly and put on clean clothing. Users should remove PPE immediately after handling this product. As soon as possible, wash thoroughly and change into clean clothing.

### ENVIRONMENTAL HAZARDS

This Product is toxic to fish and aquatic invertebrates. Do not apply directly to water, or to areas where surface water is present or to intertidal areas below the mean high water mark. Do not contaminate water when disposing of equipment, wash water or rinsate. See Directions for Use for additional precautions and requirements.

### PHYSICAL OR CHEMICAL HAZARDS

**Contents under pressure.** Do not use or store near heat or open flame. Do not puncture or incinerate container. Exposure to temperatures above 130°F may cause bursting. Do not apply this product around electrical equipment due to the possibility of shock hazard.

## FIRST AID

### IF ON SKIN OR CLOTHING:

- Take off contaminated clothing.
- Rinse skin immediately with plenty of water for 15-20 minutes.
- Call a poison control center or doctor for treatment advice.

Have the product container or label with you when calling a poison control center or doctor, or going for treatment. For information regarding medical emergencies or pesticide incidents, call 1-888-740-8712.



EPA Reg. No. 1021-1767  
EPA Est. No. 1021-MN-2  
1011-1211

Manufactured by MGK®  
©2011 MGK. All rights reserved.  
8810 Tenth Avenue North, Minneapolis, MN 55427

2.5M-1111